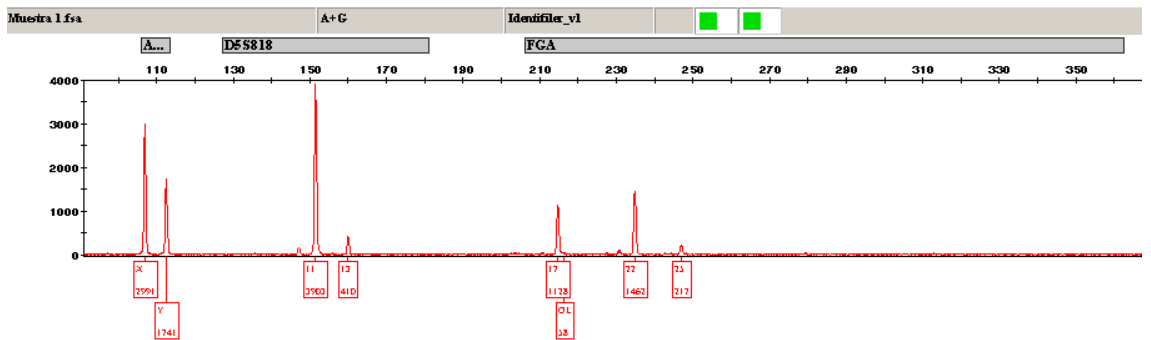
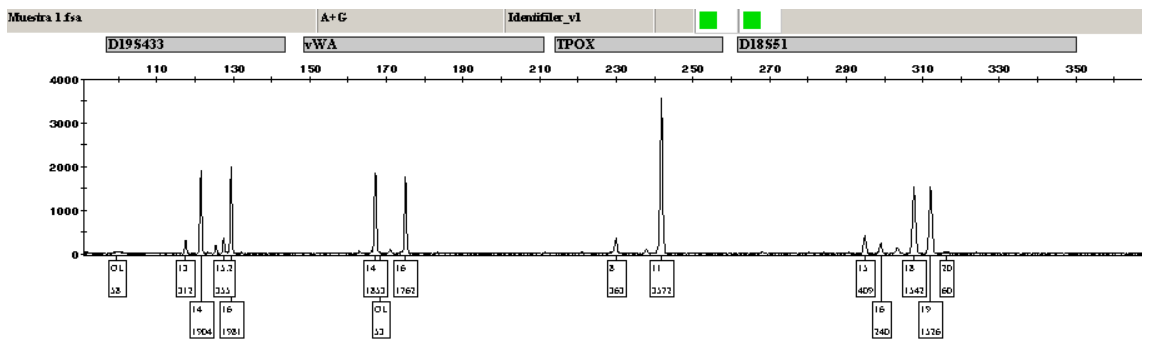
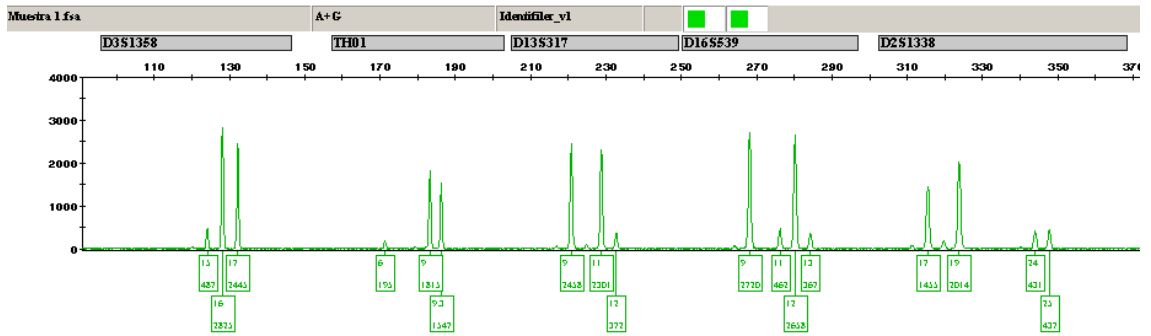
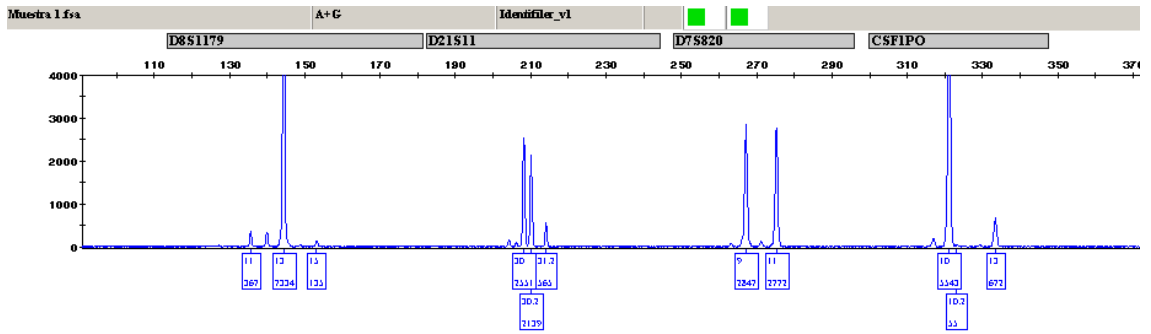


MUESTRA 1

1. Visión global



2. VISTA EN DETALLE POR MARCADOR

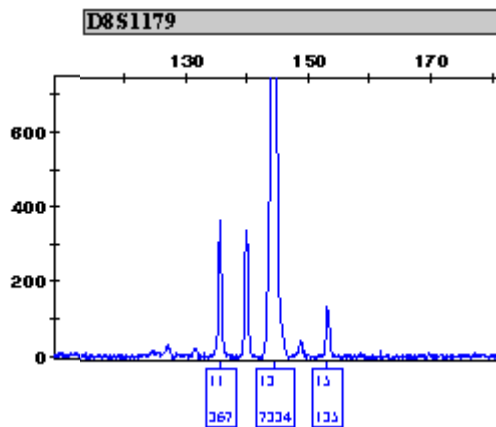
Entre paréntesis se indican aquellos alelos que los laboratorios marcaron como minoritarios. A efectos de valoración no se distinguió entre los laboratorios que marcaron la presencia del alelo/s procedentes del componente minoritario de los que no lo hicieron.

D8S1179

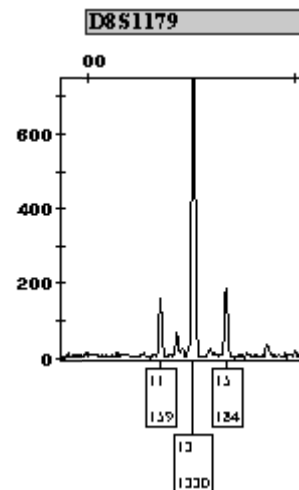
D8S1179				
11-13	(11)-13-(15)	11-12-13	11-12-13-15	
3	26	1	2	Nº
9,38	81,25	3,13	6,25	%

D8S1179	
Muestra Indubitada A	Muestra indubitada G
11-15	13

Identifiler



Powerplex



D21S11

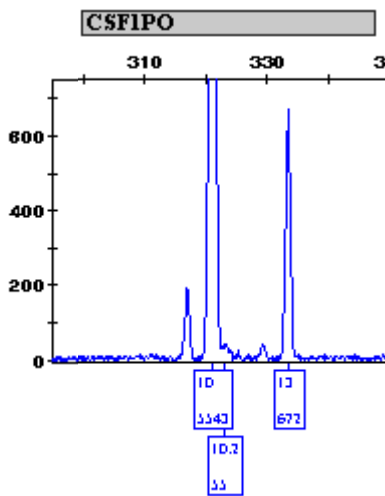
D21S11		
30-30.2-31.2	30-30.2-(31.2)	29-30-30.2-31.2
30		2
93,75		6,25

CSF1PO

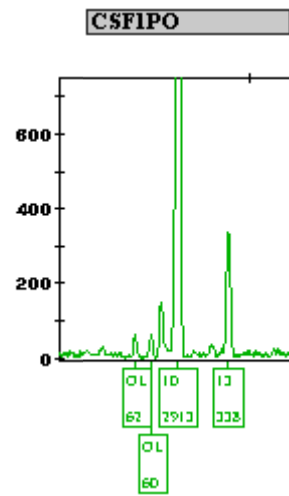
CSF1PO		
10-13	10-(13)	9-10-13
31		1
96,88		3,13

CSF1PO	
Muestra Indubitada A	Muestra indubitada G
13	10

Identifiler mezcla



Powerplex mezcla

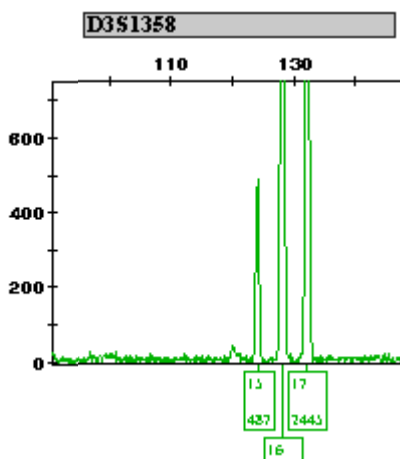


D3S1358

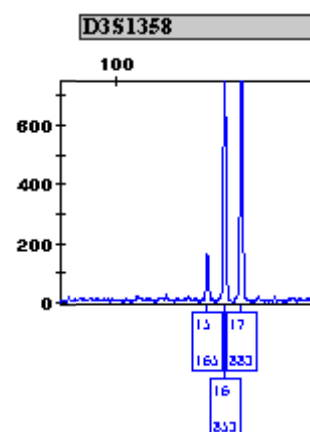
D3S1358	
15-16-17	(15)-16-17
31	
96,88	

D3S1358	
Muestra Indubitada A	Muestra indubitada G
15-16	16-17

Identifiler mezcla



Powerplex mezcla

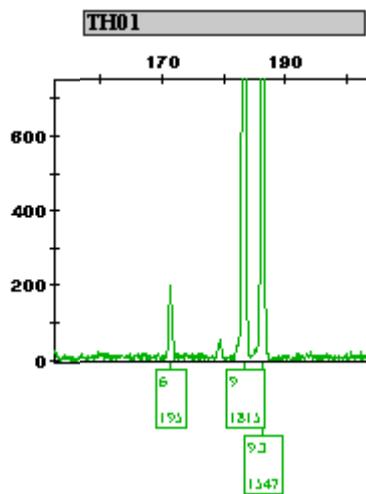


TH01

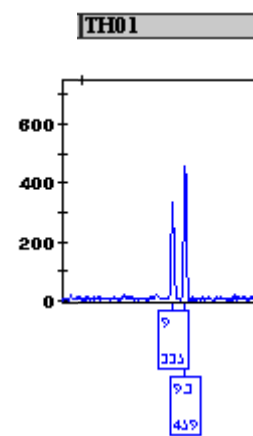
TH01				
9-9.3	9-(9.3)	6-9-9.3	(6)-9-9.3	6-9-10
4		27		1
12,50		84,38		3,125

TH01	
Muestra Indubitada A	Muestra indubitada G
6-9	9-9.3

Identifiler mezcla



Powerplex mezcla

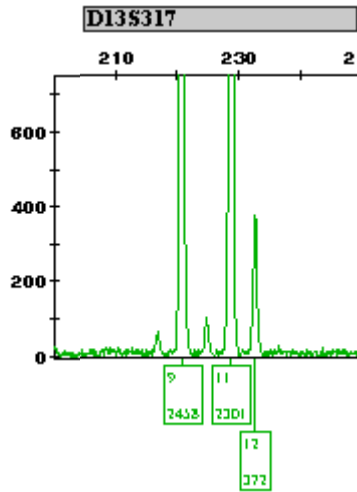


D13S317

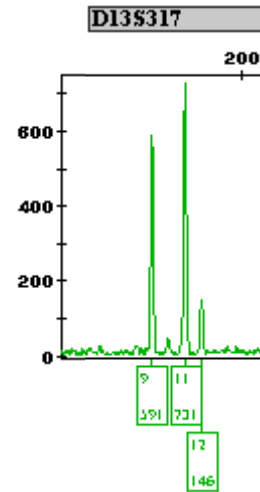
D13S317	
9-11-12	9-11-(12)
32	
100,00	

D13S317	
Muestra Indubitada A	Muestra indubitada G
11-12	9-11

Identifiler mezcla



Powerplex mezcla

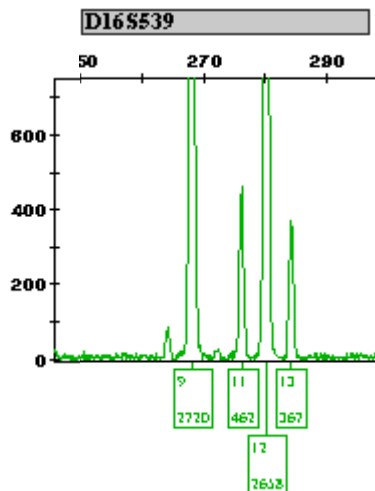


D16S539

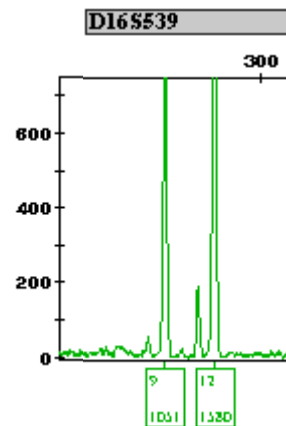
D16S539				
9-12	9-11-12	9-(11)-12	9-11-12-13	9-(11)-12-(13)
1	2			29
3,125	6,25			90,63

D16S539	
Muestra Indubitada A	Muestra indubitada G
11-13	9-12

Identifiler mezcla



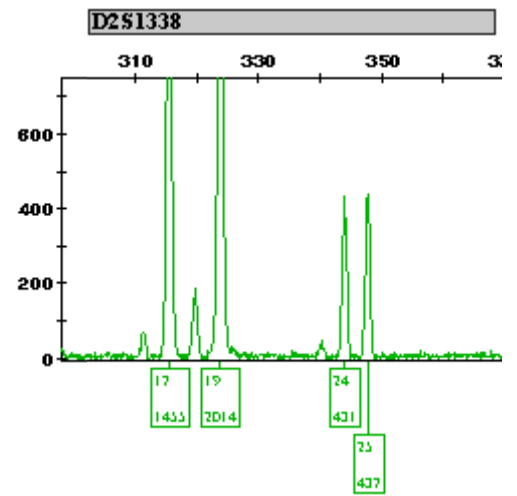
Powerplex mezcla



D2S1338

D2S1338	
17-19-24-25	17-19-(24)-(25)
30	
93,75	

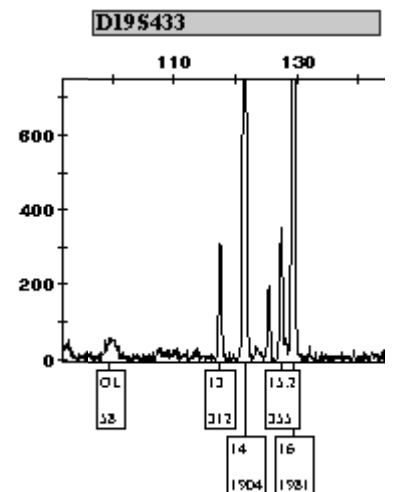
D2S1338	
Muestra Indubitada A	Muestra indubitada G
24-25	17-19



D19S433

D19S433		
14-(15.2)-16	13-14-15.2-16	(13)-14-(15.2)-16
1	28	
3,13	87,50	

D19S433	
Muestra Indubitada A	Muestra indubitada G
13-15.2	14-16

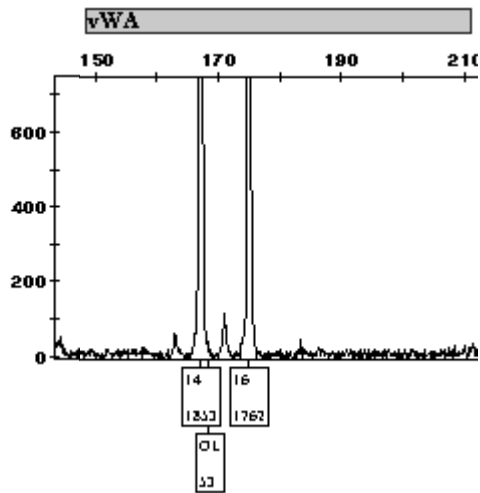


vWA

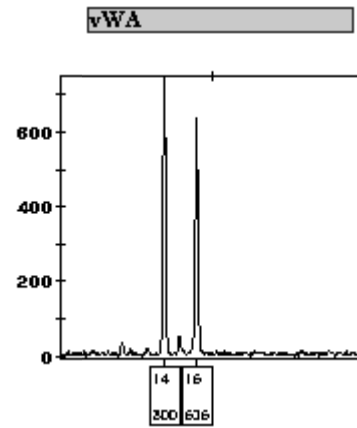
vWA	
14-16	14-15-16
31	1
96,88	3,13

vWA	
Muestra Indubitada A	Muestra indubitada G
14-16	14-16

Identifiler mezcla



Powerplex mezcla

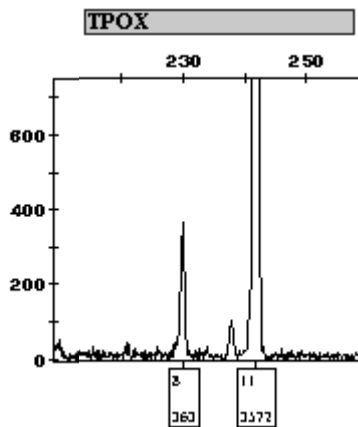


TPOX

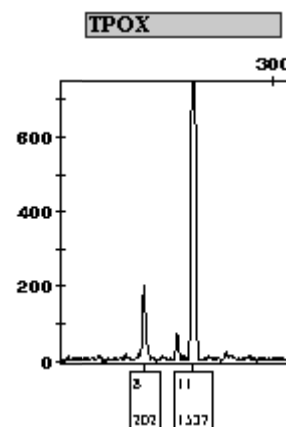
TPOX	
8-11	(8)-11
32	
100,00	

TPOX	
Muestra Indubitada A	Muestra indubitada G
8	11

Identifiler mezcla



Powerplex mezcla

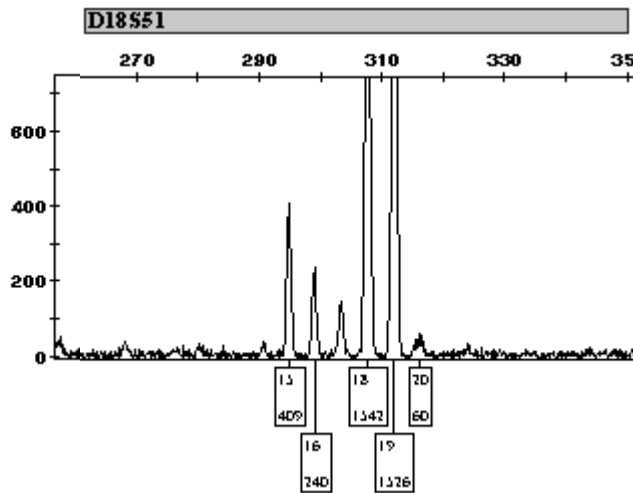


D18S51

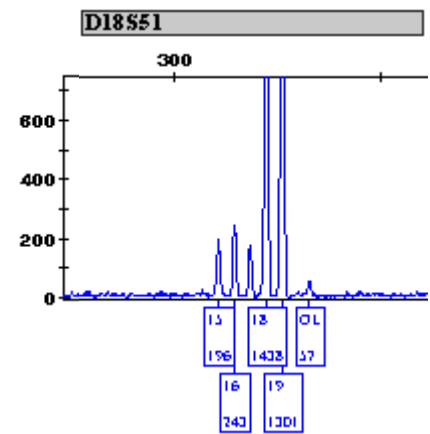
D18S51		
15-16-18-19	(15)-(16)-18-19	15-16-17-18-19
	30	2
	93,75	6,25

D18S51	
Muestra Indubitada A	Muestra indubitada G
15-16	18-19

Identifiler mezcla



Powerplex mezcla

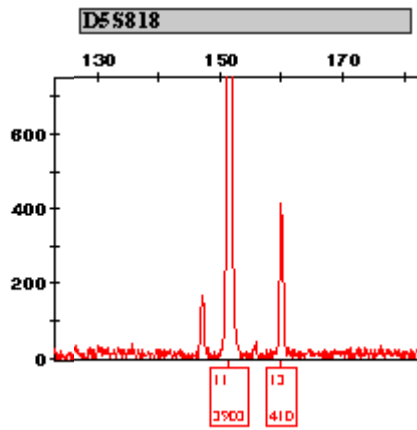


D5S818

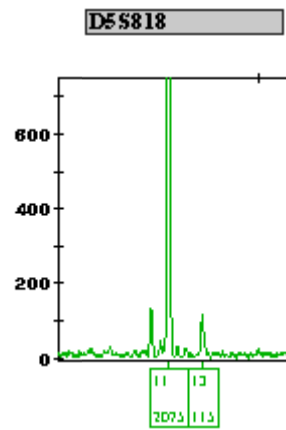
D5S818		
11	11-13	11-(13)
2		30
6,25		93,75

D5S818	
Muestra Indubitada A	Muestra indubitada G
11-13	11

Identifiler mezcla



Powerplex mezcla

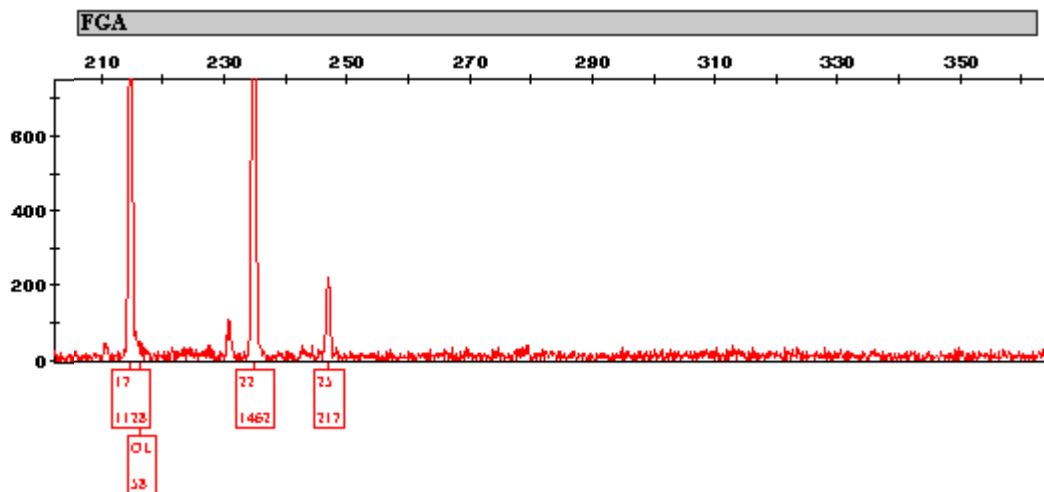


FGA

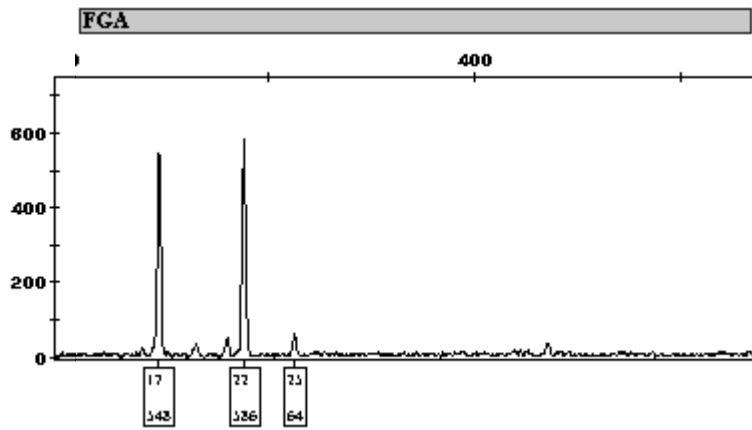
FGA		
17-22	17-22-25	17-22-(25)
2	30	
6,25	93,75	

FGA	
Muestra Indubitada A	Muestra indubitada G
22-25	17-22

Identifiler



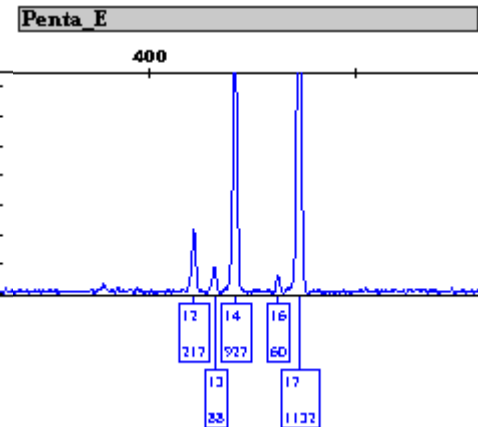
Powerplex



Penta E

Penta E			
12-14-17	(12)-14-17	12-16-17	(12)-(13)-14-17
21		1	2
65,63		3,13	6,25

Penta E	
Muestra Indubitada A	Muestra indubitada G
12-13	14-17



Penta D

Penta D		
13	12-13	(12)-13
7		17
21,88		53,13

Penta D	
Muestra Indubitada A	Muestra indubitada G
9-12	13

