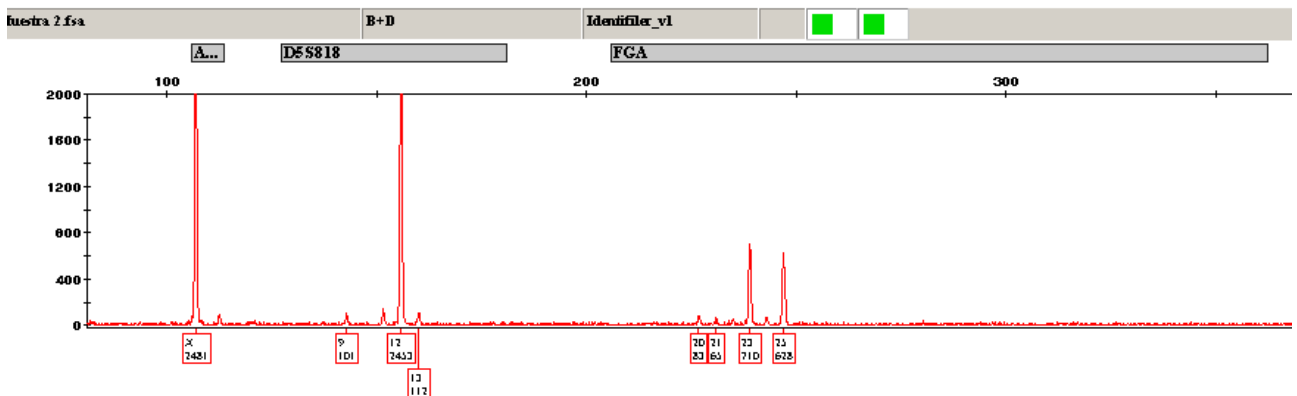
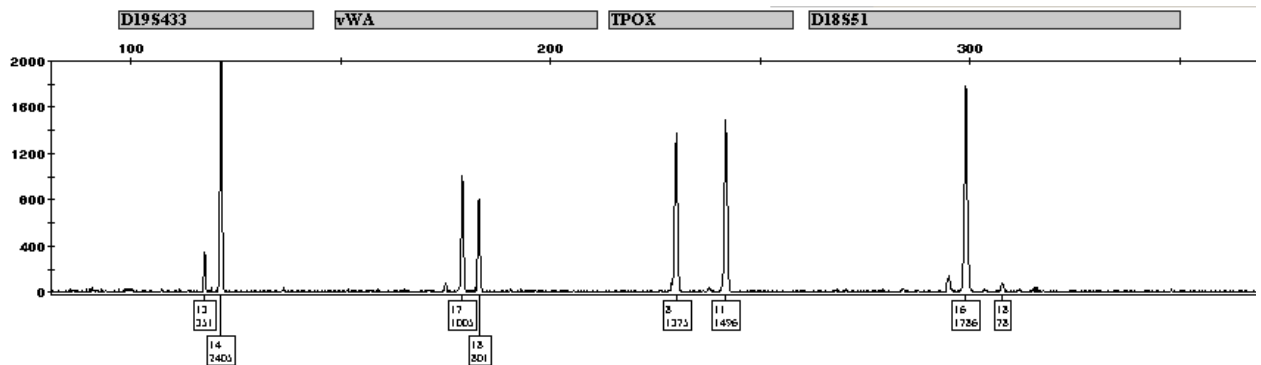
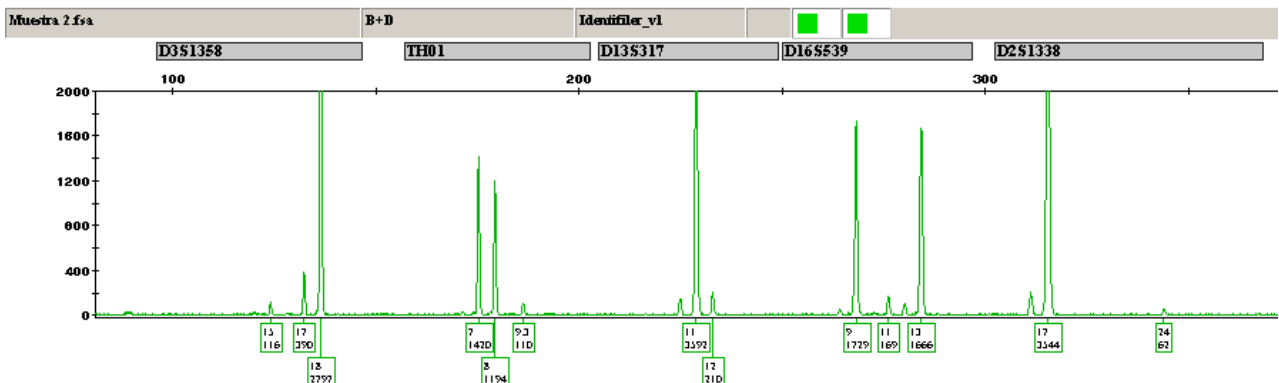
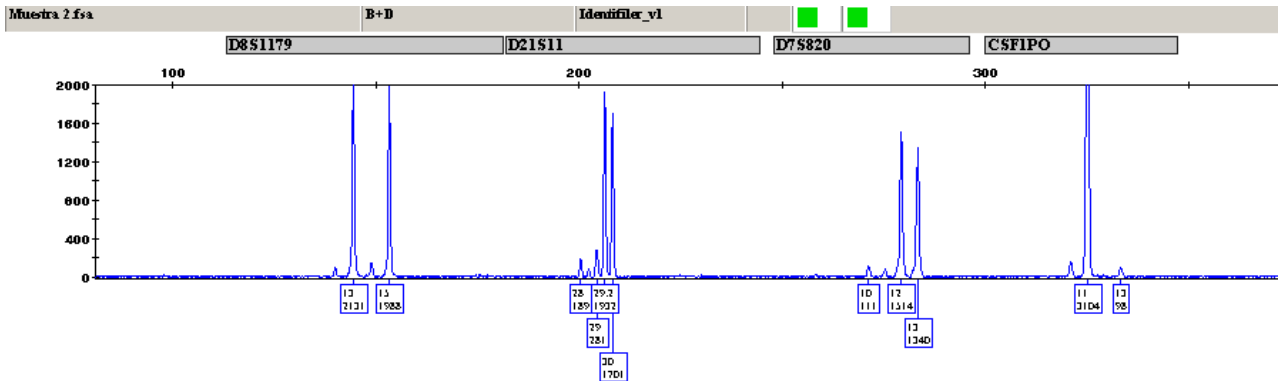


# MUESTRA 2

## 1. Visión global



## 2. VISTA EN DETALLE POR MARCADOR

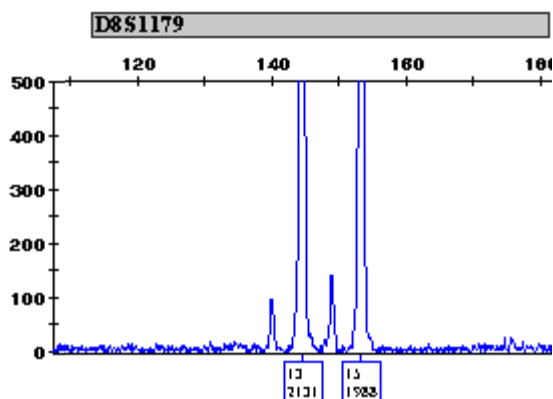
Entre paréntesis se indican aquellos alelos que los laboratorios marcaron como minoritarios. A efectos de valoración no se distinguió entre los laboratorios que marcaron la presencia del alelo/s procedentes del componente minoritario de los que no lo hicieron.

### D8S1179

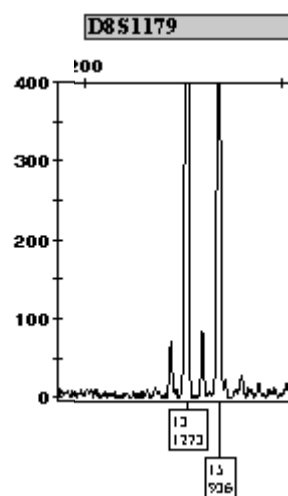
D8S1179			
13-15	13-14-15	12-13-14-15	(12)-13-(14)-15
27	1	4	
84,4 %	3,1 %	12,5 %	

D8S1179	
Muestra Indubitada B	Muestra indubitada D
13	13-15

Identifiler mezcla



Powerplex mezcla



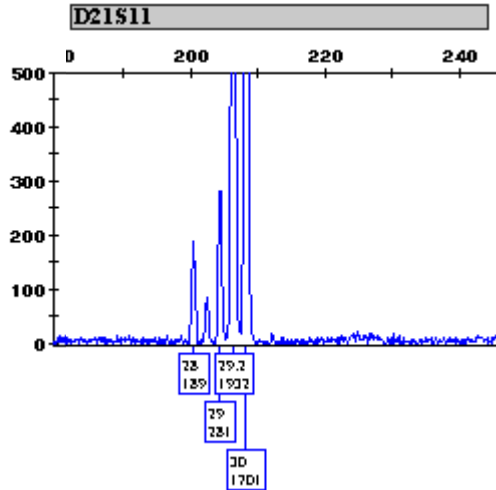
### D21S11

D21S11		
29.2-30	(29)-29.2-30	(28)-29.2-30
2	2	2
6,2 %	6,2 %	6,2 %

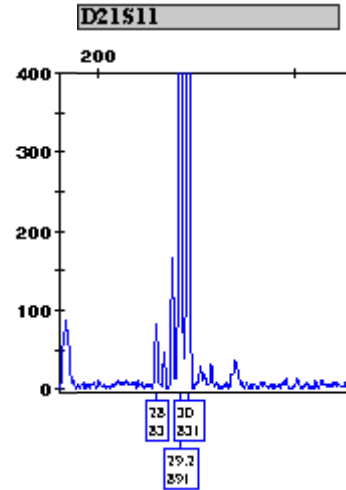
D21S11			
28-29-29.2-30	(28)-(29)-29.2-30	28-29-(29.2)-30	(28)-(28.2)-29-29.2-30
26			1
81,2 %			3,1 %

D21S11	
Muestra Indubitada B	Muestra indubitada D
28-29	29.2-30

Identifiler



Powerplex

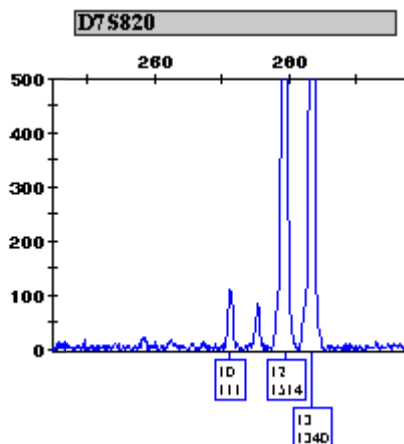


**D7S820**

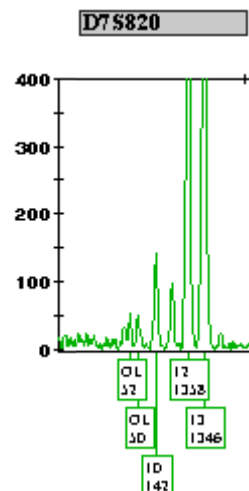
D7S820				
12-13	10-12-13	(10)-12-13	10-11-12-13	10-(11)-12-13
1	27			4
3,1 %	84,3 %			12,5 %

D7S820	
Muestra Indubitada B	Muestra indubitada D
10-12	12-13

Identifiler



Powerplex

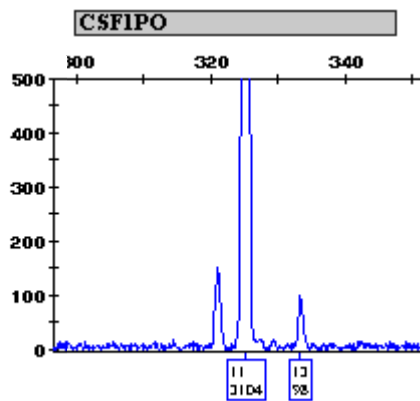


## CSF1PO

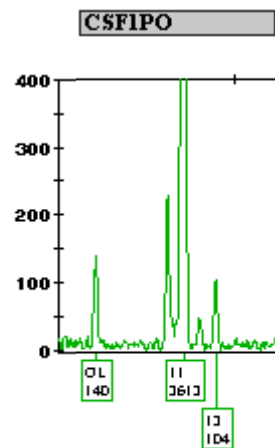
CSF1PO						
11	10-(11)	11-(13)	11-13	10-11-13	(10)-11-(13)	10-11-12-13
3	1	19		8		1
9,3 %	3,1 %	59,3 %		25 %		3,1 %

CSF1PO	
Muestra Indubitada B	Muestra indubitada D
11-13	11

### Identifier



### Powerplex mezcla

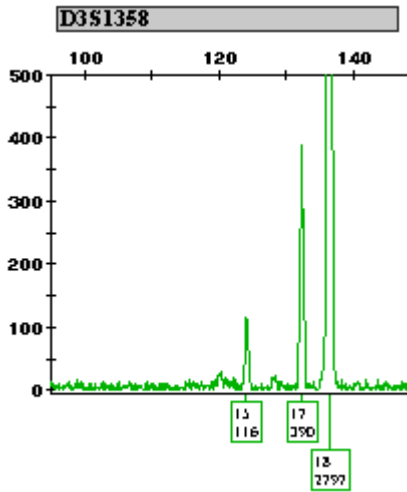


## D3S1358

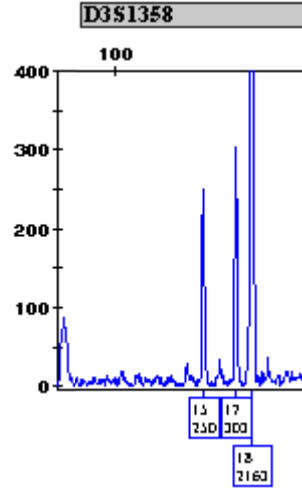
D3S1358					
18	15-18	(15)-18	17-18	15-17-18	(15)-(17)-18
1	6		1	24	
3,1 %	18,7 %		3,1 %	75 %	

D3S1358	
Muestra Indubitada B	Muestra indubitada D
15-17	18

**Identifiler**



**Powerplex**



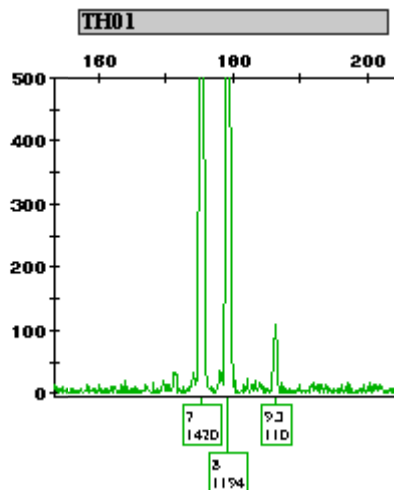
**TH01**

---

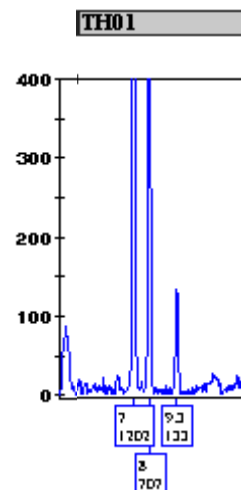
TH01		
7-8	7-8-9.3	7-8-(9.3)
3		29
9,3 %		90,6 %

D3S1358	
Muestra Indubitada B	Muestra indubitada D
7-9.3	7-8

**Identifiler**



**Powerplex mezcla**



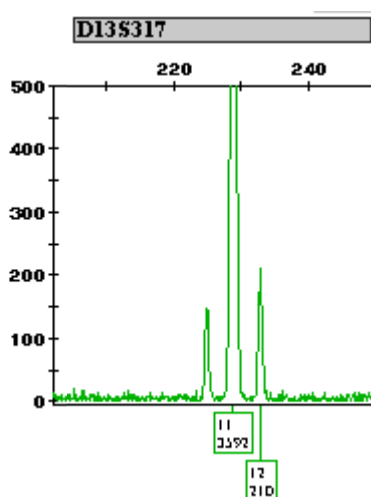
## D13S317

---

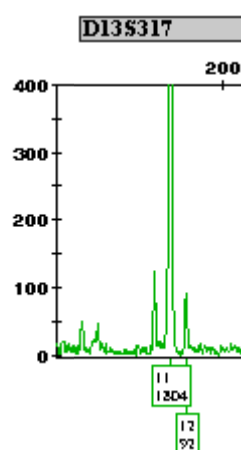
D13S317			
11	11-12	11-(12)	10-11-12
2	25		5
6,2 %	78,12 %		15,6 %

D13S317	
Muestra Indubitada B	Muestra indubitada D
11-12	11

Identifiler



Powerplex



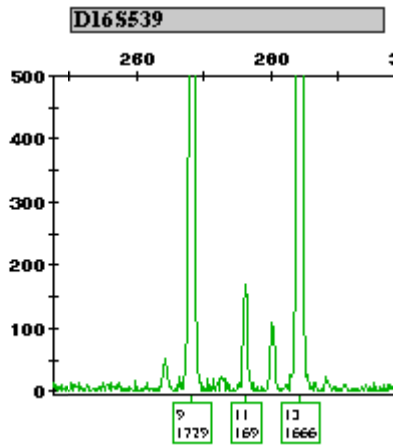
## D16S539

---

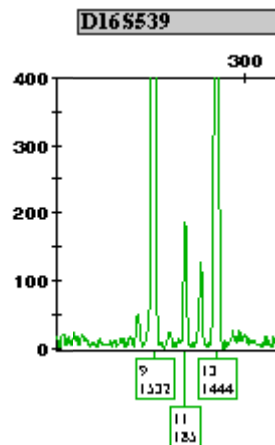
D16S539					
9-13	9-11-13	9-(11)-13	9-11-12-13	9-(11)-(12)-13	(8)-9-(11)-(12)-13
1	22			8	1
3,1 %	68,7 %			25 %	3,1 %

D16S539	
Muestra Indubitada B	Muestra indubitada D
11-13	9-13

**Identifiler**



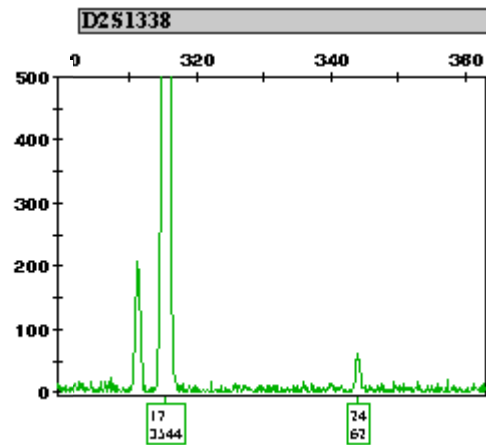
**Powerplex**



**D2S1338**

D2S1338					
17	17-24	17-(24)	16-17	16-17-24	(16)-17-(24)
6	15		1	8	
18,75	46,875		3,125	25	

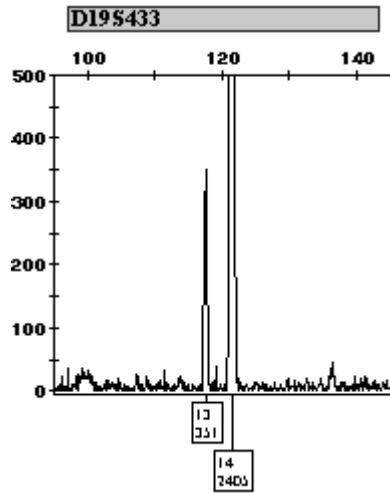
D2S1338	
Muestra Indubitada B	Muestra indubitada D
17-24	17



**D19S433**

D19S433		
14	13-14	(13)-14
4	25	
12,5 %	78,12 %	

**Identifiler mezcla**



D19S433	
Muestra Indubitada B	Muestra indubitada D
13	14

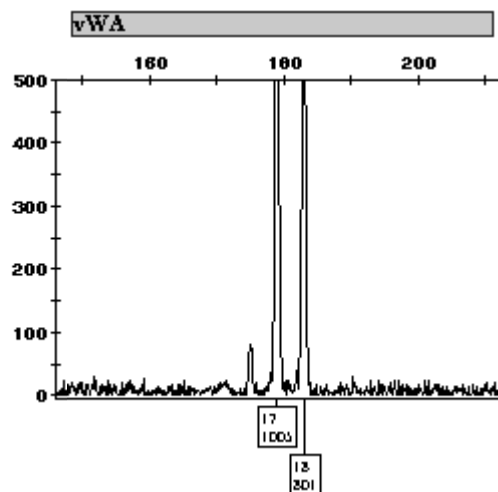
**vWA**

---

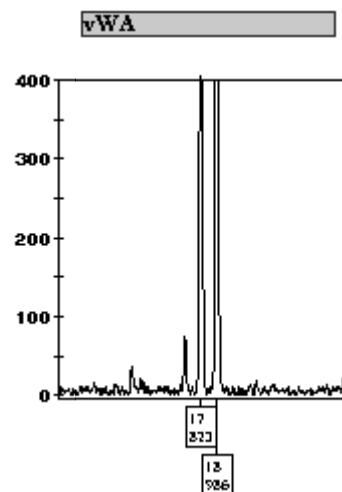
vWA	
17-18	16-17-18
28	4
87,5 %	12,5 %

vWA	
Muestra Indubitada B	Muestra indubitada D
17-18	17-18

**Identifiler**



**Powerplex**





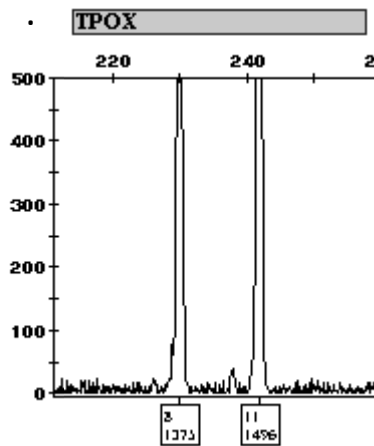
## TPOX

---

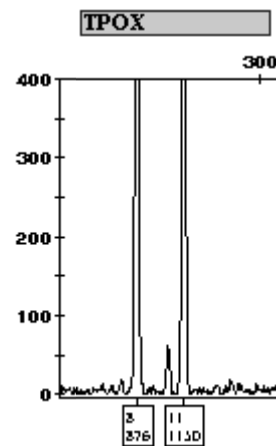
TPOX	
8-11	7-8-10-11
31	1
96,8 %	3,2 %

TPOX	
Muestra Indubitada B	Muestra indubitada D
11	8-11

### Identifiler



### Powerplex



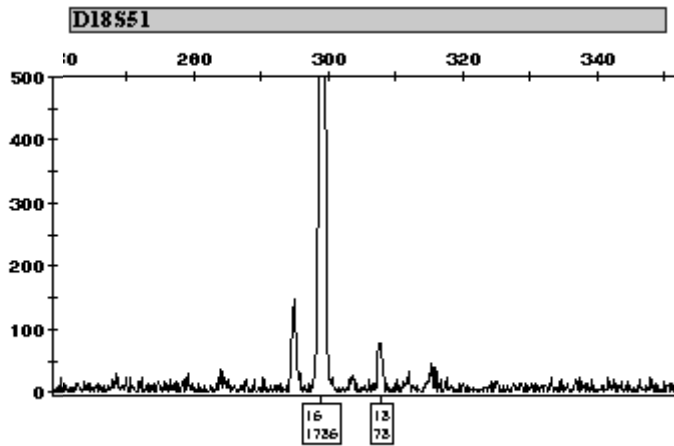
## D18S51

---

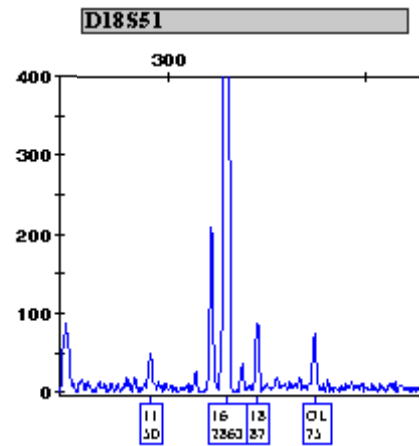
D18S51						
16	16-18	16-(18)	15-16	15-16-18	(15)-16-(18)	11-(15)-16-(18)
7	13		2		9	1
21,8 %	40,6 %		6,2 %		28,1 %	3,1 %

D18S51	
Muestra Indubitada B	Muestra indubitada D
16-18	16

**Identifiler**



**Powerplex**

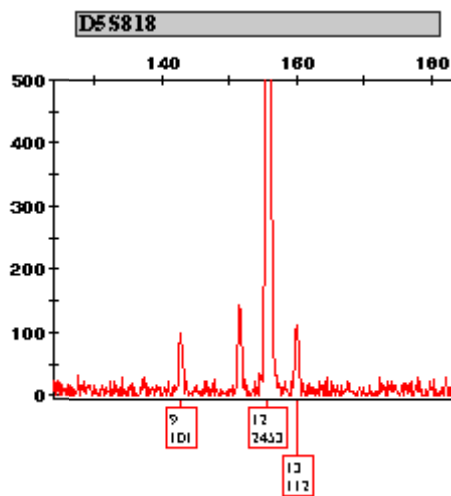


**D5S818**

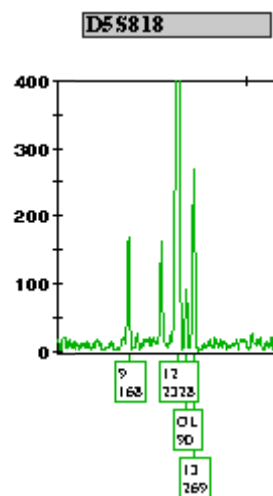
D5S818						
12	9-12	12-(13)	9-12-13	(9)-12-(13)	9-11-12-13	(9)-(11)-12-(13)
1	1	1	24		5	
3,1%	3,1%	3,1%	75%		15,6%	

D5S818	
Muestra Indubitada B	Muestra indubitada D
9-13	12

**Identifiler**



**Powerplex**

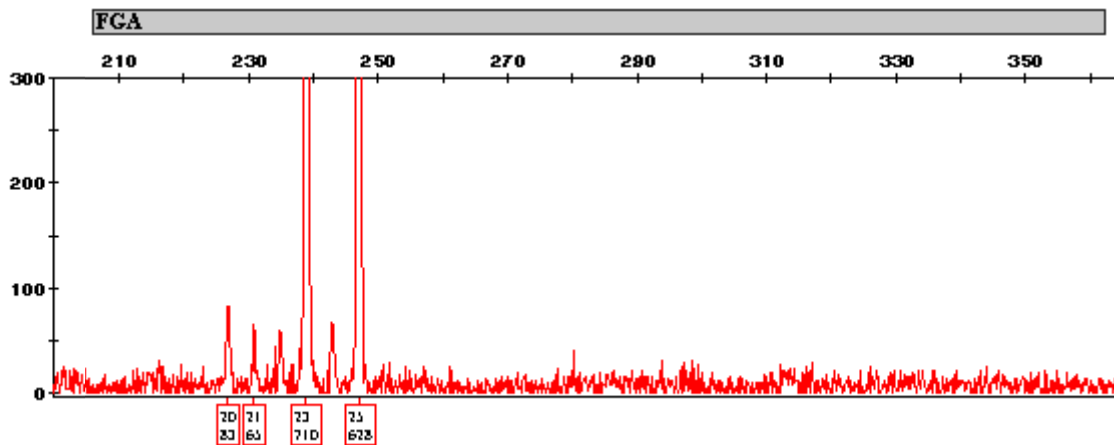


## FGA

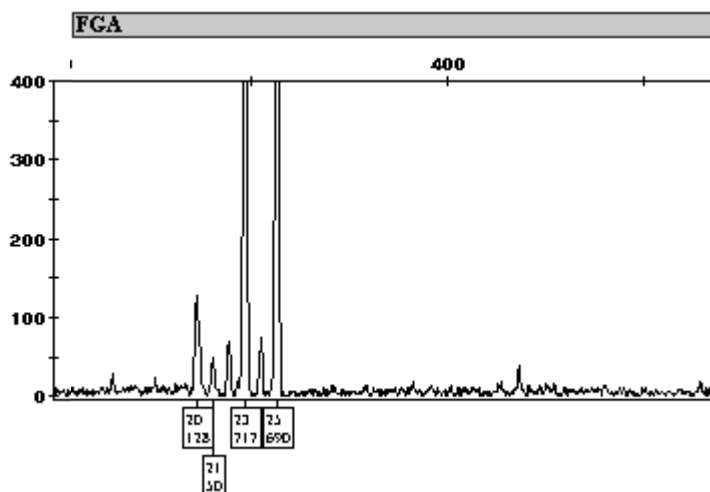
FGA				
23-25	20-23-25	(20)-23-25	20-21-23-25	(20)-(21)-23-25
3	7			22
9,375 %	21,875 %			68,75%

D5S818	
Muestra Indubitada B	Muestra indubitada D
20-21	23-25

### Identifiler



### Powerplex

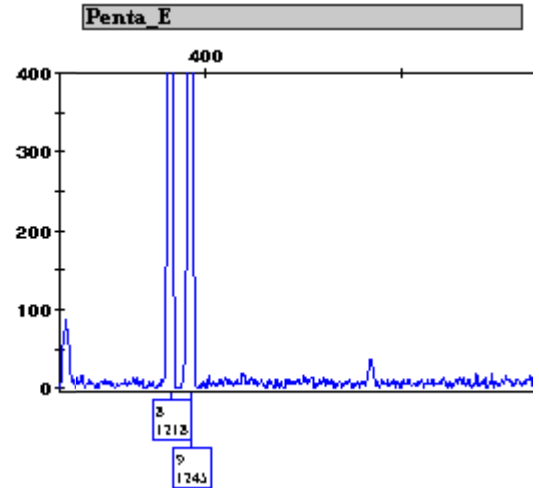


## Penta E

---

Penta E
8-9
24
75 %

Penta E	
Muestra Indubitada B	Muestra indubitada D
9-18	8-9



## Penta D

---

Penta D
12-13
24
75 %

Penta D	
Muestra Indubitada B	Muestra indubitada D
12-13	12-13

